

W

A solid orange vertical bar on the left side of the page.

WHEELY

C O L L E C T I O N

designed by
GIUSEPPE BAVUSO

Giuseppe Bavuso

Biography



Architect and designer, he lives and works in Seregno, Italy.

His projects are characterized by the combination between a strong rigor, almost minimalistic, and great technical competences, merged with the smart use of innovative and technological materials.

At the beginning of his career, he was involved in many important projects in a variety of sectors, ranging from architecture, to design, to the furnishing of large collective environments, as well as the interior planning and realization of trains and sleeping cars.

In 1986, he opens his own design

office and starts multiple collaborations with companies in the biomedical and furnishing field.

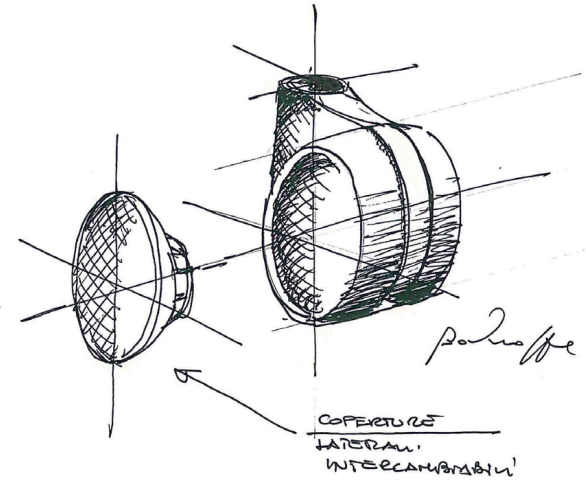
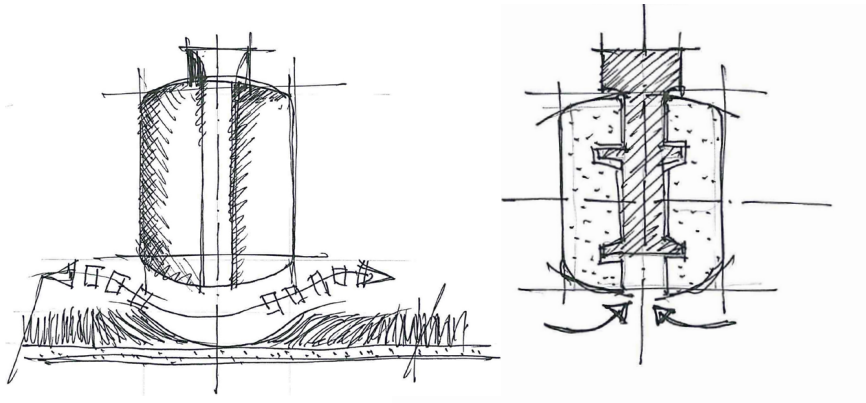
From the beginning meeting Bruno Munari, has been instrumental in his work. This attendance was illuminating and fundamental, profoundly marking his way of interpreting the profession and the approach to Design.

Architect, designer and art director, he takes care of the product from the conceptualization phase, to its technical and aesthetical development, till its visual communication.

Design and Innovation

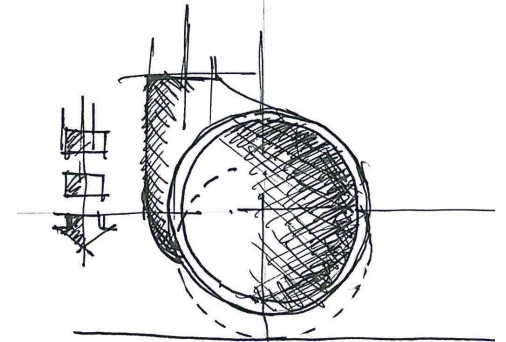
Wheely is a collection of wheels that merges formal elegance with very innovative technologies. The convex shape of the tread was thought to improve manoeuvrability on soft surfaces.

The main structure is equipped with an exclusive patented system that stops hairs and fibres from getting



stuck into the mechanical parts in order to guarantee long lasting efficiency and functionality.

These wheels can be customisable with three different typologies of plates and equipped with manual or mechanical brakes.



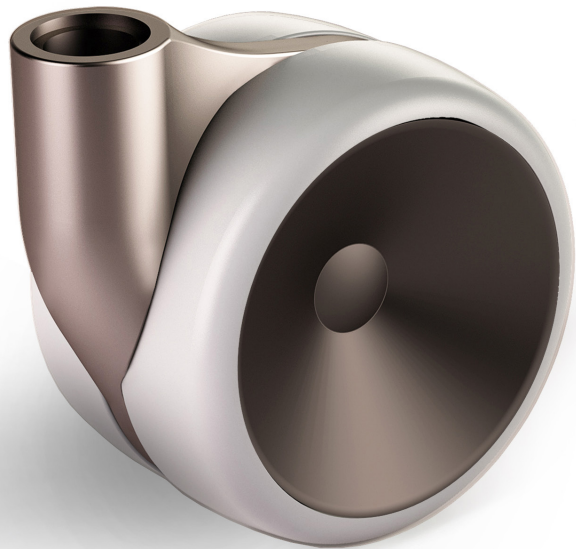
Collection

W-1



Collection

W-2



Collection

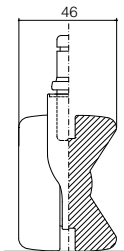
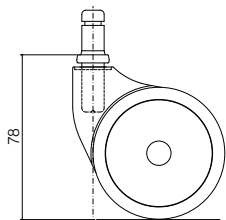
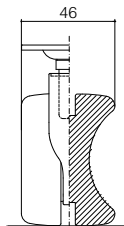
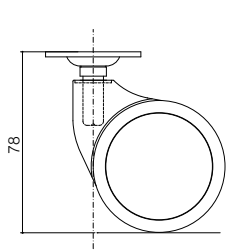
W-3



Technical elements

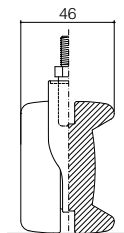
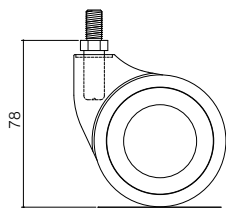
W-1

Wheel \varnothing 65 mm
Capacity Kg.50

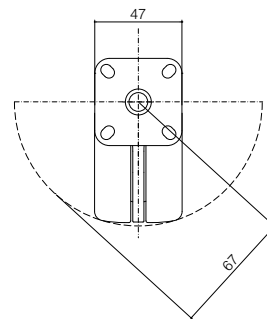


W-2

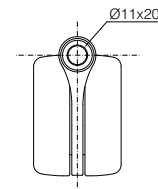
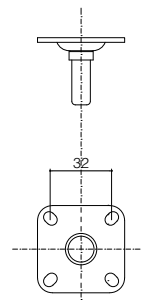
W-3



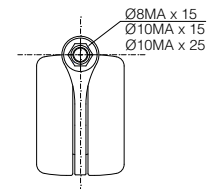
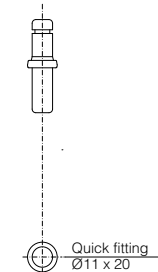
Fastening systems



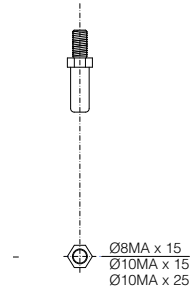
a.



b.



c.



Finishings

Support (metal) / Side discs (abs plastic)



chrome



copper



brass



satin nickel



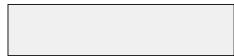
black nickel



bronze



aluminium



white



black



light grey



dark grey



brown



orange



red



acid green



night blue

Tread (rubber)



white



black



light grey



dark grey



brown



orange



red



acid green

Collection designed by Giuseppe Bavuso

Graphic design: Beatrice Bavuso



OgTM Officine Meccaniche srl
Via Maestri del Lavoro, 18, 26866
Sant'Angelo Lodigiano (LO)
Phone: +39 037 190072
Fax: +39 037 191673
info@ogtm.com
www.ogtm.com

